

Hull Identification Numbers Explained

The U.S. Federal government established a Hull Identification Number (HIN in this document) that is required for all boats manufactured or imported on or after November 1, 1972. The HIN is a 12 or 14 digit serial number that uniquely identifies a boat. It is analogous to a VIN on a motor vehicle registration. The HIN is normally used during the boat registration process and should be included on any bill of sale. Vessels manufactured or imported before this date are exempt from this requirement.

The regulations prescribe the format of the HIN. The first three characters consist of the Manufacturers Index Code and should only be letters. The following five characters are the unique serial number assigned by the Manufacturer, and can be a series of letters and/or numbers with the exception of the letters O, I, and Q (they can be easily mistaken). The last four characters determine the model and certification year of the boat. Prior to August 1, 1984, the manufacturer had the option of expressing this in the form of a model year designation.

The primary HIN must be permanently affixed or engraved (so that it can be seen from outside the boat), on the starboard side of the transom within two inches of the top of the transom, gunwale, or hull/deck joint, whichever is lowest.

Note: The HIN is not the same as a State registration number, which may be required to be displayed on the bow of your boat.



Figure 1: HIN prior to August 1, 1984

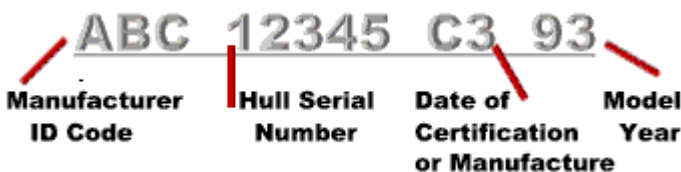


Figure 2: HIN after August 1, 1984

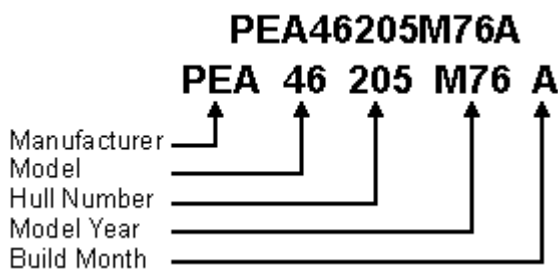


Figure 3: Pearson HIN (prior to August 1, 1984)

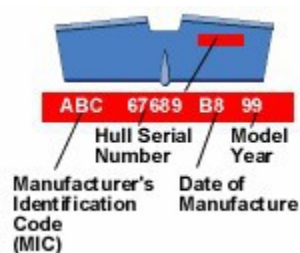


Figure 4: HIN Location

Pearson Yacht HIN

Here are the Hull Identification Numbers from three different Pearson Models that will be used as examples in this document:

- PEA58288M81A (1980 Pearson 323)
- PEA46205M76A (1975 Pearson 26)
- PEA77034H485 (1985 Pearson 385)

Manufacturers Identification Code – MIC (3 digits)

Pearson Yachts have the 3 digit code *PEA* for the Manufacturers Identification Code.

- **PEA** 58288M81A (Pearson 323 MIC = *PEA*)

Hull Serial Number (5 digits)

Pearson Yachts used the 5 digits of Hull Serial Number to specify a 2 digit factory model identifier (see table below), followed by a 3 digit hull number. This 3 digit hull number is a problem for boat productions greater than 999. For example the production of the P26, which hit 1,000 in 1975, causes the number to roll over which requires the addition of 1,000 to the number given.

- PEA **58**288 M81A (Pearson 323 factory model identifier = 58)
- PEA 58**288** M81A (Pearson 323 hull number = 288)
- PEA **46**205 M76A (Pearson 26 factory model identifier = 46)
- PEA 46**205** M76A (Pearson 26 hull number = 1205)

Date of Certification (4 digits)

Pearson Yachts used the 4 digits of Date of Certification to specify 2 digits for year, 1 digit for month (see month table below), and 1 digit that is yet undefined. As noted the naming convention changed slightly in 1984. The production year runs from August of the previous year to July of the given year.

Before August 1 1984:

- PEA 58288 M**81**A (Pearson 323 year = 1981 (production year = 1980))
- PEA 58288 M81**A** (Pearson 323 month *A* = August)

After August 1 1984:

- PEA 77034 H4 **85** (Pearson 385 year = 1985)
- PEA 77034 **H**4 85 (Pearson 385 month *H* = March)

Table 1 – Pearson Factory Model Identifier

Factory Identifier	Production Model	Factory Identifier	Production Model
39	Pearson 35 (1968-72)	65	Pearson 32 (1979-82)
46	Pearson 26 (1970-82)	66	Pearson 365 Pilothouse (1979-81)
48	Pearson 30 (1970-80)	68	Pearson Flyer (1981-??)
51	Pearson 36 (1970-76)	69	Pearson 367 36 Cutter (1981-82)
52	Pearson 10M (1973-80)	70	Pearson 37 (1982-86)
54	Pearson 28 (1976?)	71	Pearson 303 (1983-86)
55	Pearson 26 Weekender (1975-76)	72	Pearson 424 Cutter
56	Pearson 365 (1976-82)	75	Pearson 422 (1984-87)
57	Pearson 28 (1977-82?)	77	Pearson 385/386
58	Pearson 323 (1976-81)	78	Pearson 36-2 (1985-90)
59	Pearson 424 Ketch	80	Pearson 28 (1986-89)
60	Pearson 26OD (1977-83?)	90	Pearson 31-2 (1987-91)
61	Pearson 31 (1978-81)	91	Pearson 27 (1988-91)
62	Pearson 40 (1979-81)	92	Pearson 37-2 (1988-91)

Table 2 – Month of Build

Month	Code	Month	Code
August	A	February	G
September	B	March	H
October	C	April	I
November	D	May	J
December	E	June	K
January	F	July	L

PearsonYachts.org 2017

Sources: Pearson323.com, Pearsoninfo.net, Wikipedia, Boatsafe.com